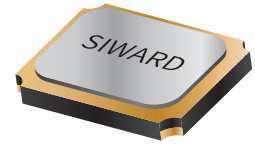


CRYSTAL UNIT

XTL58



Applications

- Bluetooth / Wireless LAN
- Wearable Devices
- LTE / SAS

Features

- Ultra thin / Dimensions (2.5×2.0×0.55)
- Ceramic Package
- High Reliability and High Stability
- Tight Tolerance and Stability
- Reflow Soldering / Emboss Taping

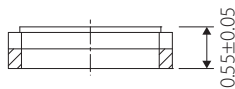
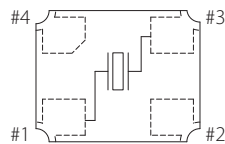
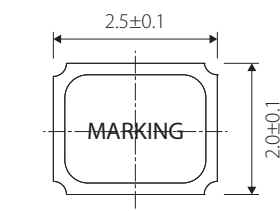
Specifications



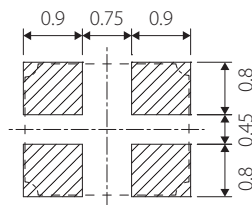
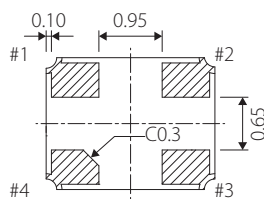
| Model | XTL58 | |
|--|---|-------------------------|
| Nominal frequency range | 12.000~66.000 MHz | |
| Crystal cut | Fundamental [AT-cut] | |
| Storage temperature range | -40~+90°C | |
| Operating temperature range | -30~+85°C | -40~+105°C |
| Frequency temperature characteristics(Ref. to +25°C) | $\pm 15 \times 10^{-6}$ | $\pm 30 \times 10^{-6}$ |
| Frequency tolerance (at +25°C) | $\pm 15 \times 10^{-6}$ | |
| Equivalent series resistance | 150Ω: 12.000~15.999 MHz 80Ω: 16.000~19.999 MHz 60Ω: 20.000~29.999 MHz 50Ω: 30.000~34.999 MHz 40Ω: 35.000~66.000 MHz | |
| Load capacitance | 8,10,12 pF or specify | |
| Shunt capacitance | 3pF max. | |
| Level of drive | 10 μW (100 μW max.) | |

Package quantity: 3,000pcs max./Reel.

Outline and Dimensions [unit:mm]



Land Pattern(REFERENCE)



| Pin Connection | |
|----------------|---------|
| #1,#3 | Crystal |
| #2,#4 | GND |